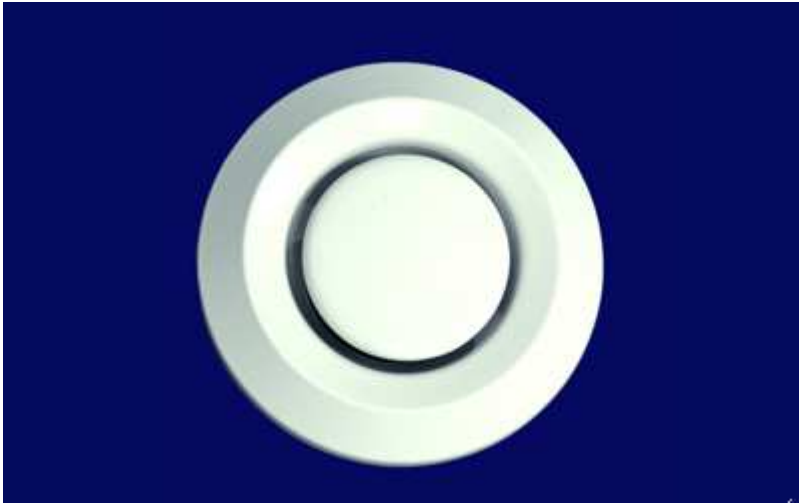




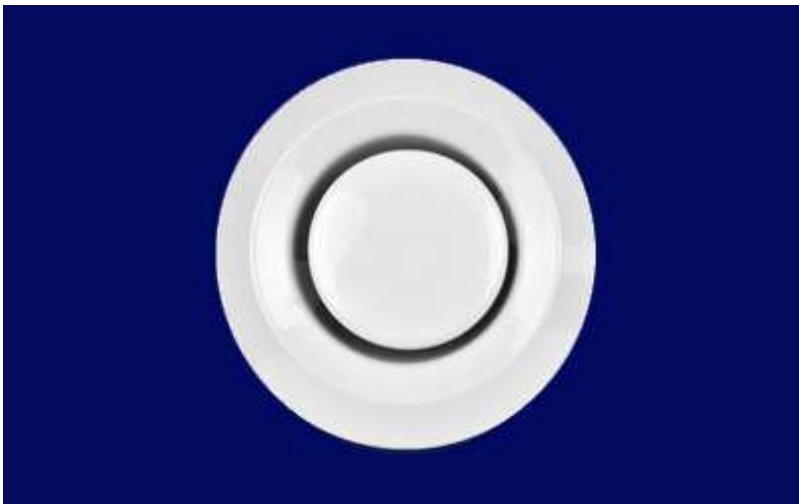
## MISCELLANEOUS

### JD - 5001



- Disc valve of 100 mm dia neck size with powder coated finish. Colour as per customer selection

### JD - 5002

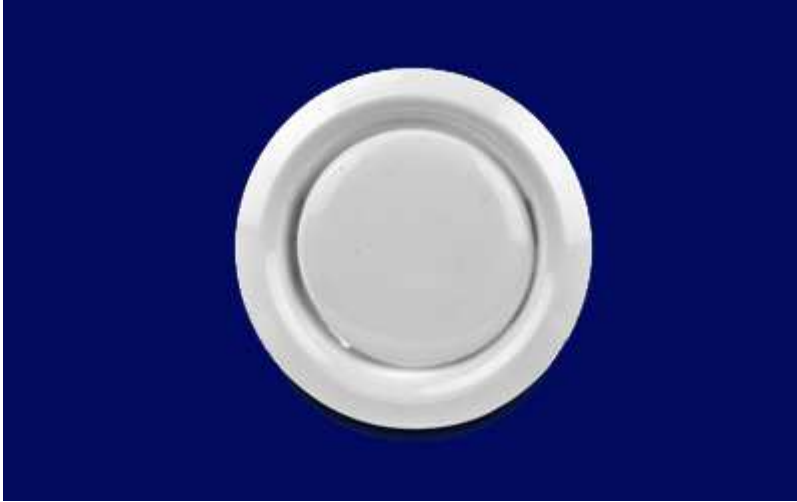


- Disc valve of 200 mm dia neck size with powder coated finish. Colour as per customer selection.



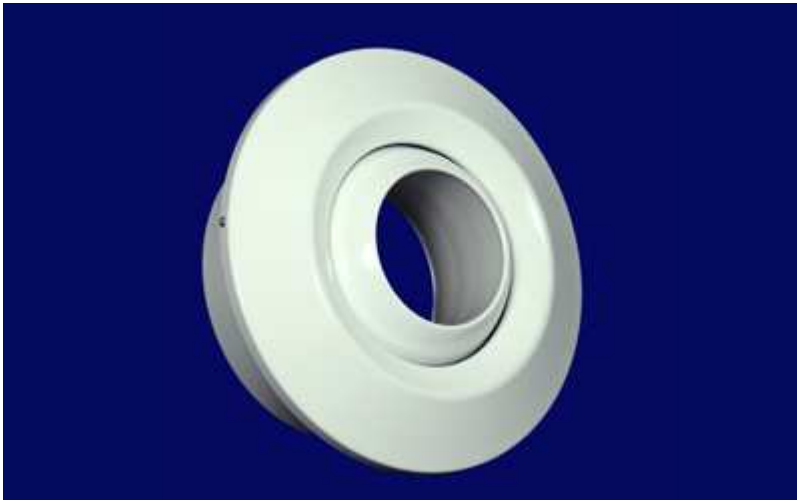
## **MISCELLANEOUS**

### **JD - 5003**



- Disc valve of 200 mm dia neck size with powder coated finish. Colour as per customer selection.

### **JD - 5004**



- Eye Ball Jet Nozzle of 150 mm dia neck size with powder coated finish. Colour as per customer selection.



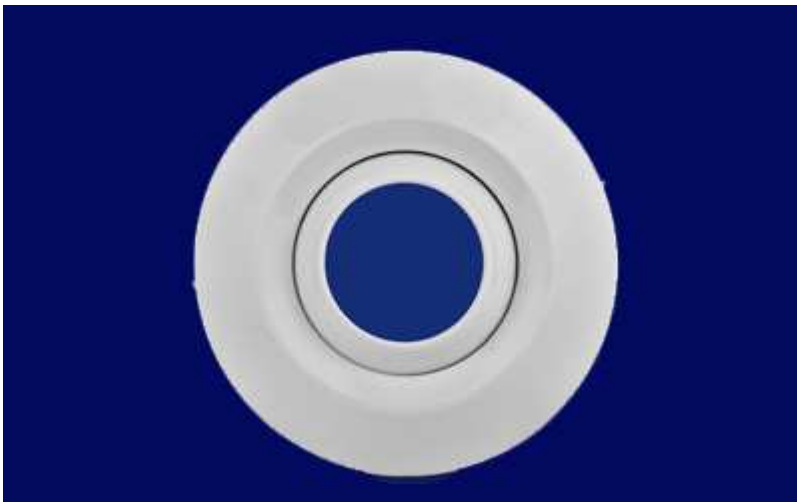
## **MISCELLANEOUS**

### **JD - 5005**



- Eye Ball Jet Nozzle of 200 mm dia neck size with powder coated finish. Colour as per customer selection.

### **JD - 5006**

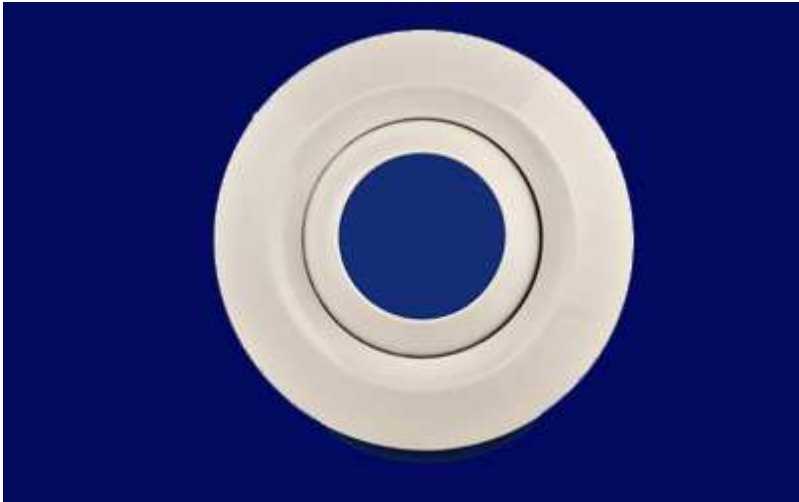


- Eye Ball Jet Nozzle of 250 mm dia neck size with powder coated finish. Colour as per customer selection.



## **MISCELLANEOUS**

### **JD - 5007**



- Eye Ball Jet Nozzle of 300 mm dia neck size with powder coated finish. Colour as per customer selection.

### **JD -5008**



- Extruded Aluminium Powder Coated Louver with rectangular outer frame .



## MISCELLANEOUS

### JD - 5009



- Extruded Aluminium Powder Coated Louver with rectangular outer frame with partition and aluminium diamond mesh to protect from birds and insects.

### JD - 5010



- Extruded Aluminium Powder Coated Louver with L – angle outer frame .



## **MISCELLANEOUS**

### **JD - 5011**



- Extruded Aluminium Powder Coated Louver with access door.

### **JD - 5012**



- Extruded Aluminium Powder Coated Louver with access door .

## **MISCELLANEOUS**

### **JD - 5013**



- Sound Attenuator

### **JD - 5014**



- Access door for indoor units and volume control dampers. Book Now



## MISCELLANEOUS

JD - 5015



- External Louvers