

DAMPERS

JD - 3001



- Extruded aluminium volume control damper with aerofoil type opposed blade doors controlled by P V C gears and operated by motor actuator.
- The flanges are suitable to connect TDF flanged ducts

JD - 3002



- G I volume control damper with opposed blade doors controlled by P V C gears and operated by motor actuator.
- The flanges are suitable to connect TDF flanged ducts

JAYDEE UTILITY CONSULTANTS PRIVATE LIMITED

No. 42 , Sy. No. 157, Jhanvi Industrial Layout

Hanchipura, Nelamangala - 562 123

BANGALORE , KARNATAKA , INDIA.

Websie: <http://www.jaydeutility.com>

DAMPERS

JD - 3003



- Volume control damper with G I outer frame and extruded aluminium aerofoil doors of opposed blade type controlled by P V C gears and manual operation.
- The flanges are suitable to connect TDF flanged ducts.

JD - 3004



- G I Fire damper with M S control links and connected with fusible links.
- The flanges are suitable to connect TDF flanged ducts.

JAYDEE UTILITY CONSULTANTS PRIVATE LIMITED

No. 42 , Sy. No. 157, Jhanvi Industrial Layout

Hanchipura, Nelamangala - 562 123

BANGALORE , KARNATAKA , INDIA.

Websie: <http://www.jaydeutility.com>

DAMPERS

JD - 3005



- G I Fire damper with M S control links and operated by motor actuator.
- These fire damper having sleeves of different sizes to suit site conditions.
- The flanges are suitable to connect TDF flanged ducts.
-

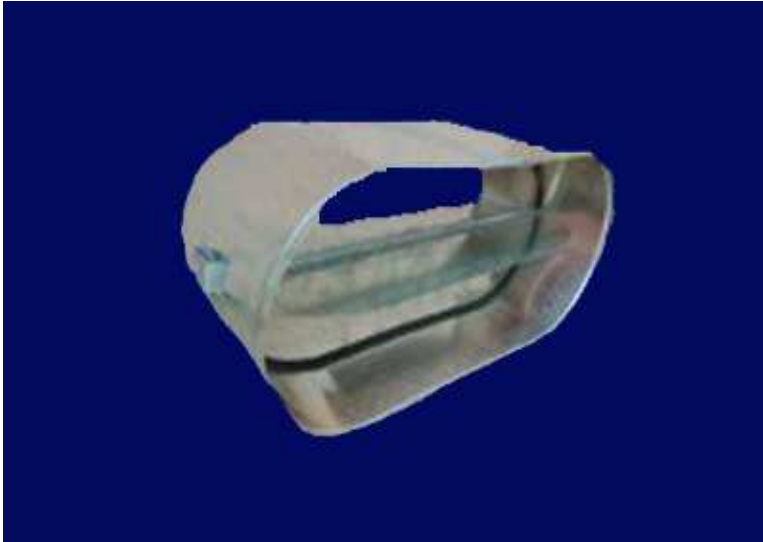
JD - 3006



- G I Fire damper with M S control links and connected with fusible links.
- These fire damper having sleeves of different sizes to suit site conditions.
- The flanges are suitable to connect TDF flanged ducts.

DAMPERS

JD - 3007



- G I VCD for oval duct.

JD - 3008



- Non Return Damper with G I outer frame and aluminium flaps.
- The flanges are suitable to connect TDF flanged ducts.

DAMPERS

JD - 3009



- Volume control damper with Pre insulated forms for frame and extruded aluminium aerofoil doors of opposed blade type controlled by P V C gears and manual operation.
- The flanges are suitable to connect TDF flanged ducts.

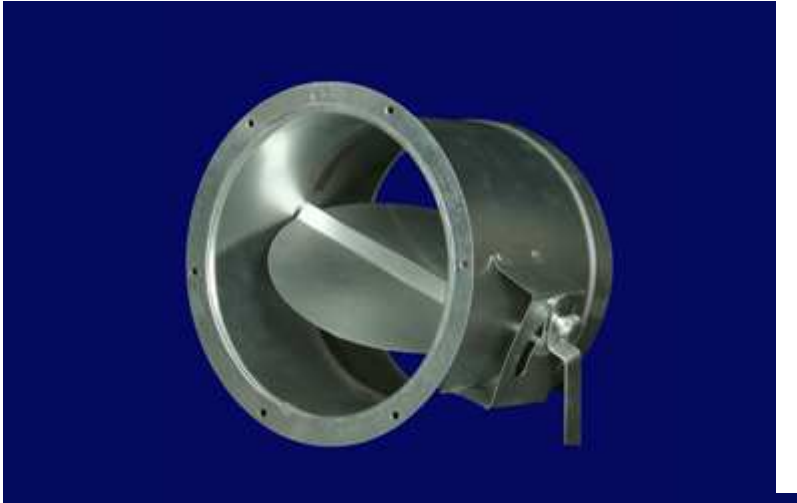
JD - 3010



- External louvers, generally fitted at the outlet of exhaust fans (non return type).

DAMPERS

JD - 3011



- Butterfly dampers are made from G I sheets and are suitable for round ducts.

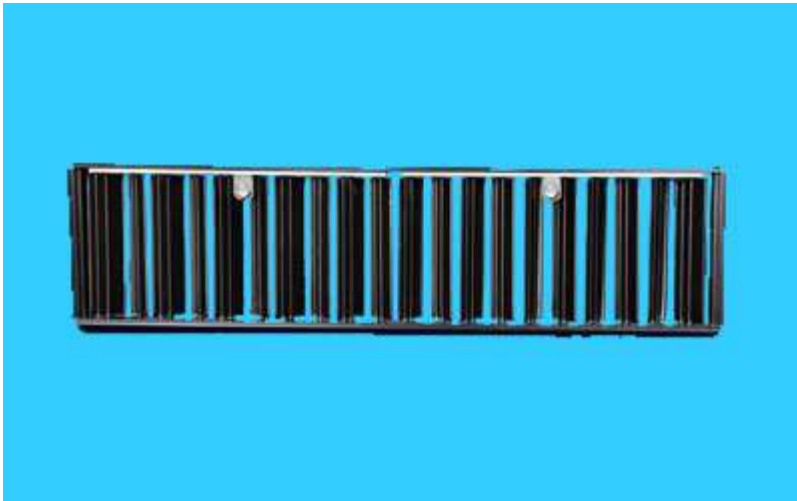
JD - 3012



- Stream Split Damper (SPD) are made from GI sheets and are used along with grills in air outlet of supply air ducts.

DAMPERS

JD - 3013



- Extruded aluminium powder coated opposed blade collar damper for installing in duct collars.

JD - 3014



- GI opposed blade collar damper for diffusers (square). Finish black enamel paint.

JAYDEE UTILITY CONSULTANTS PRIVATE LIMITED

No. 42 , Sy. No. 157, Jhanvi Industrial Layout

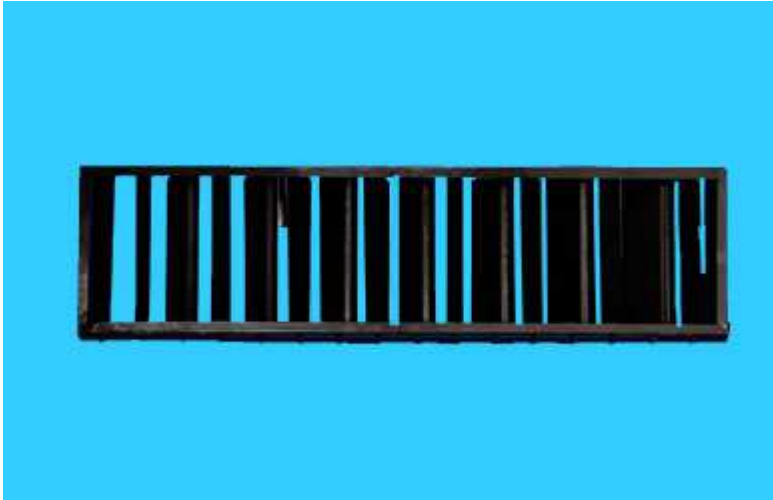
Hanchipura, Nelamangala - 562 123

BANGALORE , KARNATAKA , INDIA.

Websie: <http://www.jaydeutility.com>

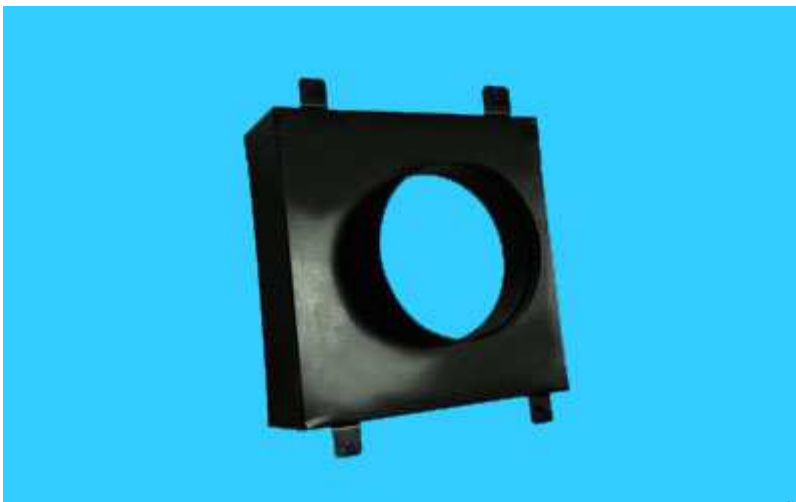
DAMPERS

JD - 3015



- GI opposed blade collar damper for grills (rectangular). Finish black enamel paint.

JD - 3016



- Spigot (mixing box) connected to the top of supply air diffusers and the air is top entry.

JAYDEE UTILITY CONSULTANTS PRIVATE LIMITED

No. 42 , Sy. No. 157, Jhanvi Industrial Layout

Hanchipura, Nelamangala - 562 123

BANGALORE , KARNATAKA , INDIA.

Websie: <http://www.jaydeutility.com>

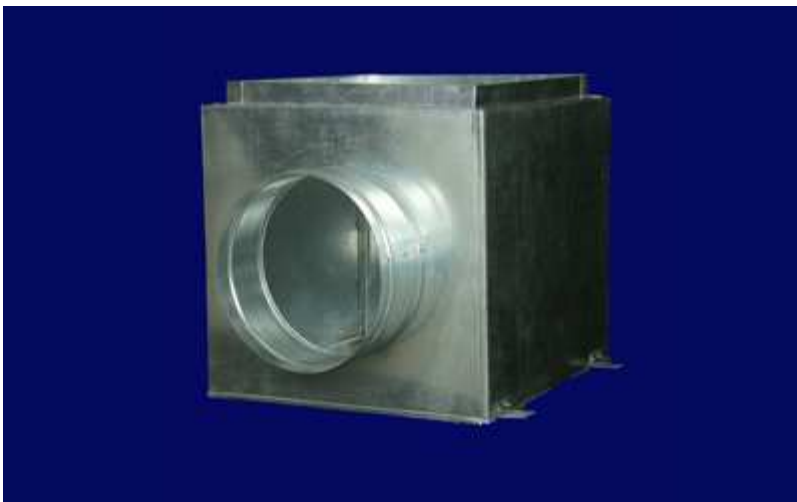
DAMPERS

JD - 3017



- Butterfly type dampers for round collars.

JD - 3018



- GI mixing box at the inlet of supply air diffusers.

JAYDEE UTILITY CONSULTANTS PRIVATE LIMITED

No. 42 , Sy. No. 157, Jhanvi Industrial Layout

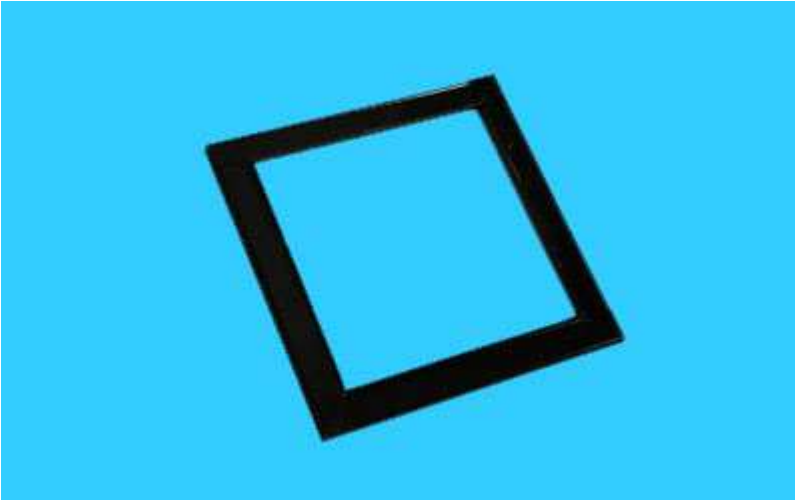
Hanchipura, Nelamangala - 562 123

BANGALORE , KARNATAKA , INDIA.

Websie: <http://www.jaydeutility.com>

DAMPERS

JD - 3019



- Adaptor to connect a diffuser of any neck size with the existing duct collar.

JD - 3020



- G I duct connecting piece with TDF flanges.